



# SOFTWARE

**Intelligent printing and managing  
of large format print jobs  
with free software and  
software tools from Canon**

**Canon**

---

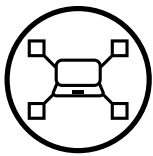
See the bigger picture

# SOFTWARE AND SOFTWARE TOOLS FOR LARGE FORMAT PRINTING WITH CANON SYSTEMS

Canon offers you a comprehensive and free software package that you can download from the Canon website. It simplifies printing on your imagePROGRAF, as well as its control and management. Thanks to the software's straightforward operation, you can quickly get an overview of print status and costs, or easily design your own posters.



## PRINT EASILY, QUICKLY AND COST-EFFECTIVELY WITH CANON SOFTWARE FOR imagePROGRAF



### Setup, control and administration

- Quick Utility Tool Box
  - > Basic Tool
  - > Management Tool
    - >> Accounting Manager
    - >> Device Management Console
    - >> Media Configuration Tool
- Status Monitor



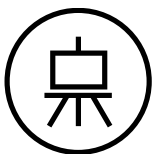
### Printing via mobile devices

- Canon PRINT Inkjet/SELPHY
- Print Utility for iPad (iOS)
- Canon Print Service (Android)



### CAD and production printing

- Direct Print Plus
- Driver Select
- Publisher Select 3



### Photo and Fine Art

- Professional Print & Layout



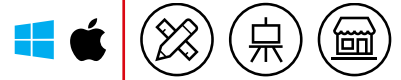
### PoS and Office

- Free Layout plus
- PosterArtist Lite
- PosterArtist (Web version)

# SETUP, CONTROL AND ADMINISTRATION OF LARGE FORMAT PRINTERS

## QUICK UTILITY TOOL BOX

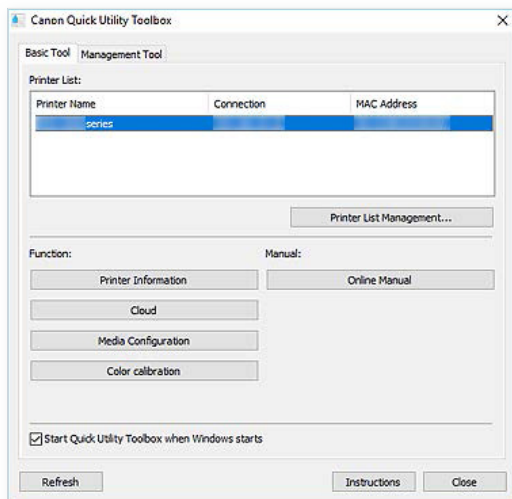
imagePROGRAF TA, TM, TX, GP, PRO-S, PRO series and TZ-30000



**Quick Utility Toolbox** is a context menu that allows you to easily set up, control and manage your wide format printers.

This menu is organized in two tabs: the **Basic Tool** and the **Management Tool**. The **Basic Tool** displays the printers in a list that can be configured and managed according to your needs. There are four functions available for this purpose. In addition, you have direct access to the online manual.

### Basic Tool tab



The **Printer List** window lists the printers installed on your computer and manages them in the **Printer List Management...** dialogue box – i.e. added, set up etc.

Under **Function** you are given four further options for managing your printing systems.

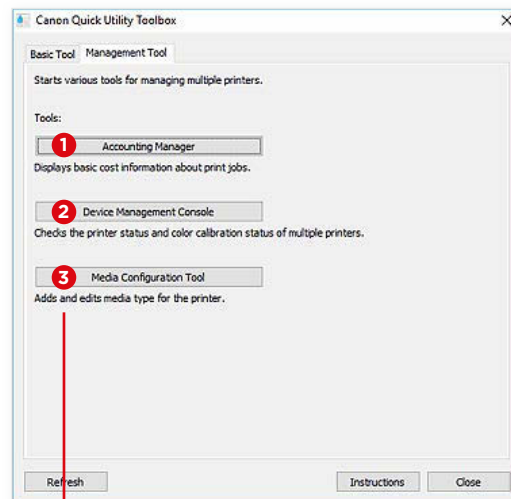
**Printer Information** opens the printer's web page and displays the printer menu settings, which can also be changed there. Ink levels and current and saved print jobs are displayed and can be changed, prioritised or deleted.

**Media Configuration** takes you directly to the Media Configuration Tool, where you can add or edit information about the print media.

The **Color calibration** button launches the Calibration Tool, which allows you to perform colour calibration on all imagePROGRAF series graphic printers to ensure the perfect colour representation every time.

The **Management Tool** tab takes you to the stand-alone software tools **Accounting Manager**, **Device Management Console** and **Media Configuration Tool** with a single click. These tools must be installed manually in advance.

### Management Tool tab



#### 1 Accounting Manager

Tool for calculating the printer's printing costs, e.g. by department or user

#### 2 Device Management Console

Tool for checking multiple printer states or calibration status

#### 3 Media Configuration Tool

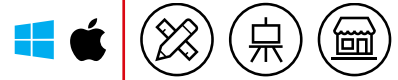
Tool for adding or editing the printer's print media information.

These three software tools are described on the next pages.

# SETUP, CONTROL AND ADMINISTRATION OF LARGE FORMAT PRINTERS

## ACCOUNTING MANAGER

imagePROGRAF TA, TM, TX, GP, PRO-S, PRO series and TZ-30000



Keep your printing costs under control and in full view – the Accounting Manager is your perfect tool for this.

First, the printers that are to be automatically monitored by the Accounting Manager in the network must be created in the printer administration and be online.

In a continuous data exchange with the managed printers, **job logs** are recorded, saved on the hard disk of your computer or server and can be **exported as CSV files**.

This way you can find out by whom and when printing was done and what printing costs were incurred. To do this, you can create an **account ID** and, for example, create a **departmental or job-related calculation** very easily. Data retrieval can be controlled by an administrator and optionally protected by a password.

With the Accounting Manager, data can be collected regularly and at certain intervals, summaries can be created or the collected data can be filtered.

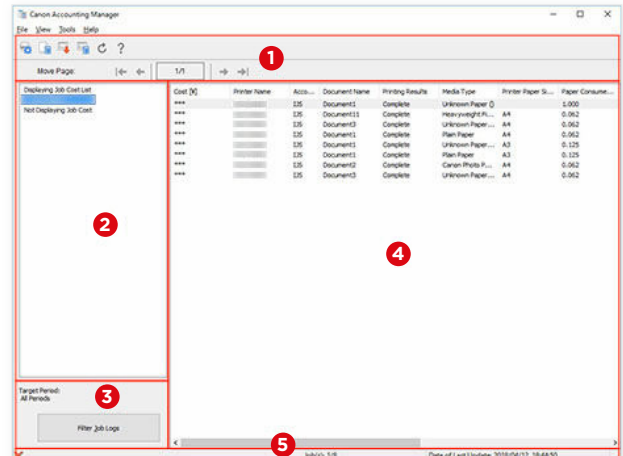
In addition, it is possible to define separate costs, such as costs for folding or laminating or the labour costs incurred, for printing in the Accounting Manager and apply them to the total price.

At the touch of a button, you can create a **tabular representation** that gives you a very good overview of the costs incurred.

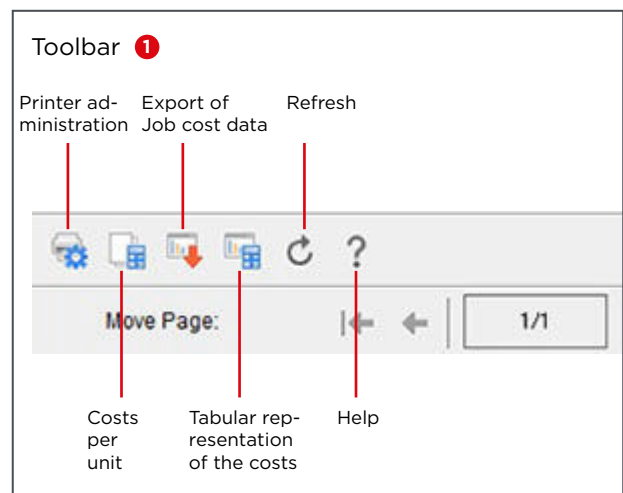
To always be up to date, you can update the data in the Accounting Manager at any time using the "Refresh" button.

Clicking on the button with the question mark will open the help function.

**Note:** In Accounting Manager, estimated values of ink and print media consumption per print are displayed, which may differ by  $\pm 15\%$  from the actual consumption due to the varying conditions of use of the printers.



- 1 Toolbar
- 2 List of managed printers
- 3 Target period and filter button
- 4 List shows cost of print job
- 5 Status bar

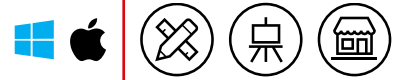




# SETUP, CONTROL AND ADMINISTRATION OF LARGE FORMAT PRINTERS

## DEVICE MANAGEMENT CONSOLE

imagePROGRAF TA, TM, TX, GP, PRO-S, PRO series and TZ-30000



The Device Management Console is used to check and calibrate one or more printers within a network.

By registering your printers via this management tool, you can query their status, which is then clearly displayed in the **Printer Status** tab.

Use the **icons on the toolbar** to call up the printer management menus and make your notification settings.

Even in your absence, the system informs you by **email** or warns you of printing errors with an **acoustic alarm**.

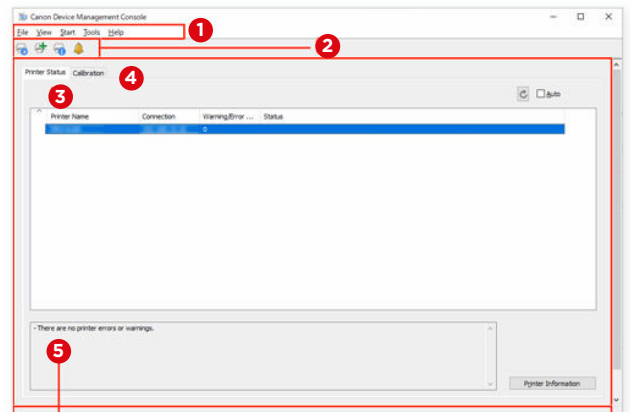
This way, you can be notified via your **smartphone or tablet** whenever a print job is completed or paused. To use this feature, you must have **PRINT Inkjet/SELPHY** software installed on your mobile device and set up for your large format printer.

You can also **remotely check** the **printer status** with ink tank and maintenance cartridge levels as well as media used from your PC or mobile devices.

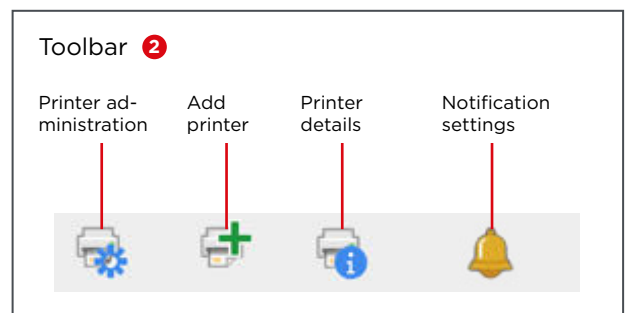
The **Calibration tab** also allows you to perform a colour calibration of your imagePROGRAF PRO and PRO-S series printers, as well as the GP-2000 and GP-4000 – if you wish, even according to an execution plan you have defined and planned.

For calibrating the printer, the **ink application** on a selected print medium is measured and adjusted by the multi-sensor of the printing system on the basis of the selected media type and the stored ICC profile. Calibration is immensely important for consistently accurate colour reproduction and should be carried out regularly.

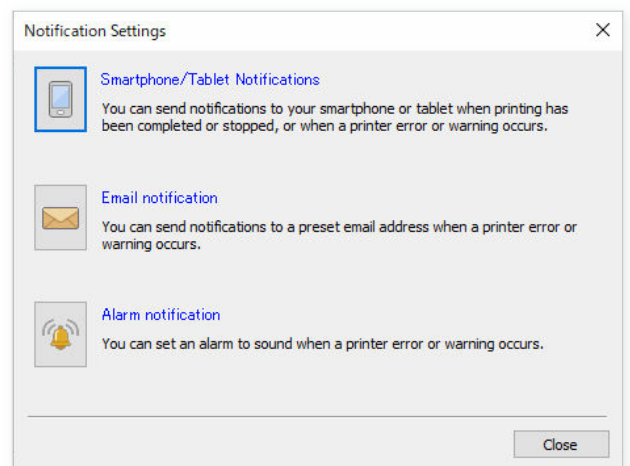
You can also calibrate the printer via the Basic Tool and the Colour Calibration button (see p. 3).



- 1 Menu bar
- 2 Toolbar
- 3 Printer Status tab
- 4 Calibration tab
- 5 Status bar



Notifications via mobile device, email or alarm



# SETUP, CONTROL AND ADMINISTRATION OF LARGE FORMAT PRINTERS

## MEDIA CONFIGURATION TOOL

imagePROGRAF TA, TM, TX, GP, PRO-S, PRO series and TZ-30000



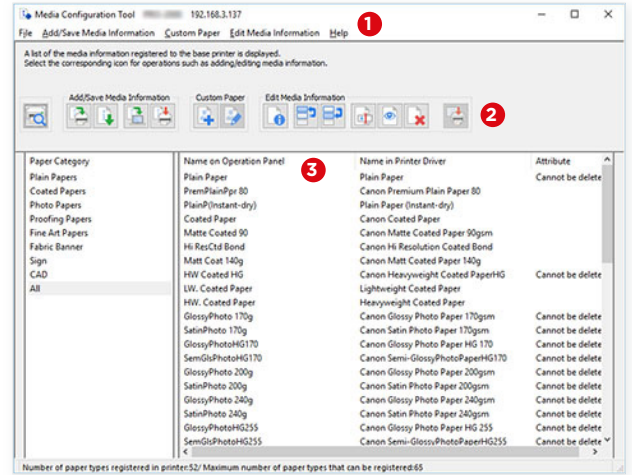
Manage your print media quickly and easily with the Media Configuration Tool and achieve perfect print quality by adjusting the print media information.

For the perfect management of print media, you can use the toolbar buttons to change the name and order of print media, show and hide them, add new print media, update, change or delete existing ones.

Furthermore, you can create new media settings and link and export them to a print media manufacturer's ICC profile for import and use on other printing systems.

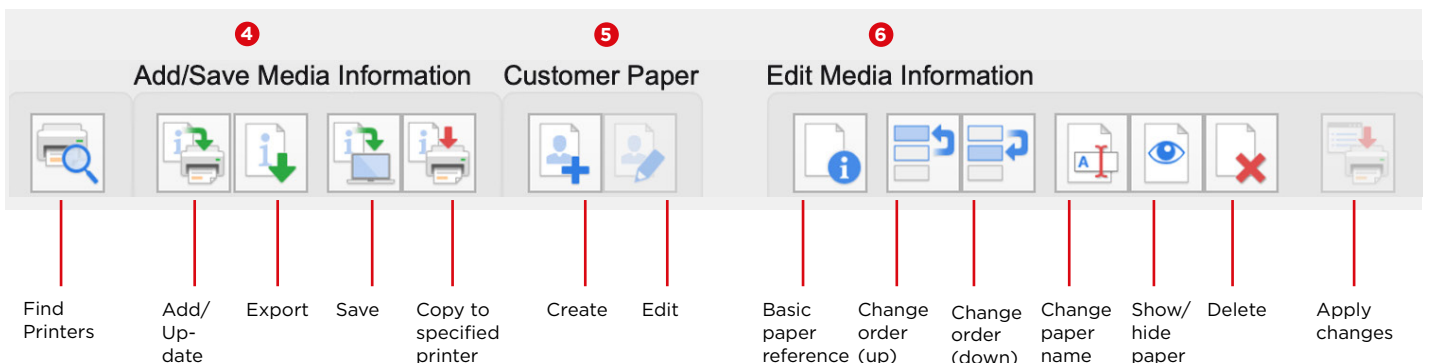
The ICC profile ensures a precise match between print media, print head and ink application for an optimal print result. This allows you to make configurations to the cutter, print head, print quality, calibration target and colour tone and save them in the media settings.

With the Media Configuration Tool you get a powerful tool to configure your print media individually and to use it across fleets, which should ideally be done by a printer administrator.



- 1 Menu bar
- 2 Toolbar
- 3 List of all available media

- 4 Add/Save Media Information
- 5 Custom Paper
- 6 Edit Media Information



# SETUP, CONTROL AND ADMINISTRATION OF LARGE FORMAT PRINTERS

## STATUS MONITOR

imagePROGRAF TA, TM, TX, GP, PRO-S, PRO series and TZ-30000



This administration tool displays the printer status and progress of the current print job as well as the status of consumables.

The Status Monitor is started automatically when print data is sent to the printer. Once started, the Status Monitor software tool is displayed as a button in the task bar and opens when the button is clicked.

To open the Status Monitor when the printer is not printing, open the printer driver setup window and click on "View Printer Status" on the "Maintenance" tab.

The Status Monitor is automatically displayed when an error occurs, for example, when the printer runs out of paper or ink.

The Remote UI button takes you to the **printer's web page** and allows you to view the ink levels and status of the print media.

The screenshot shows the Windows taskbar with the Status Monitor button (1). The Print settings window for Canon PRO-6100 is open, showing the Maintenance tab with the Status Monitor button (2). The Remote UI window (3) displays printer status, including ink levels (5), maintenance cartridge (6), and paper feed (7).

Paper feed	Paper size	Paper type	Remaining...
Single sheet	Unknown	Unknown	Unknown
Roll 1	36-inch roll (914,4mm)	Canon Premium Glo...	8.4m
Roll 2	Unknown	Unknown	Unknown

- 1 Taskbar, Status Monitor button
- 2 Print settings, Status Monitor button
- 3 Printer status
- 4 Remote UI tab
- 5 Ink levels
- 6 Maintenance cartridge
- 7 Paper feed

# PRINTING VIA MOBILE DEVICES

## CANON PRINT INKJET/SELPHY

imagePROGRAF TA, TM, TX, GP, PRO-S, PRO series and TZ-30000



This is how you become even more mobile – with the Canon PRINT Inkjet/SELPHY app. Print comfortably and easily from your mobile devices on imagePROGRAF large format printers.

Download the print app to your mobile device from the Apple App Store or Google Play Store.

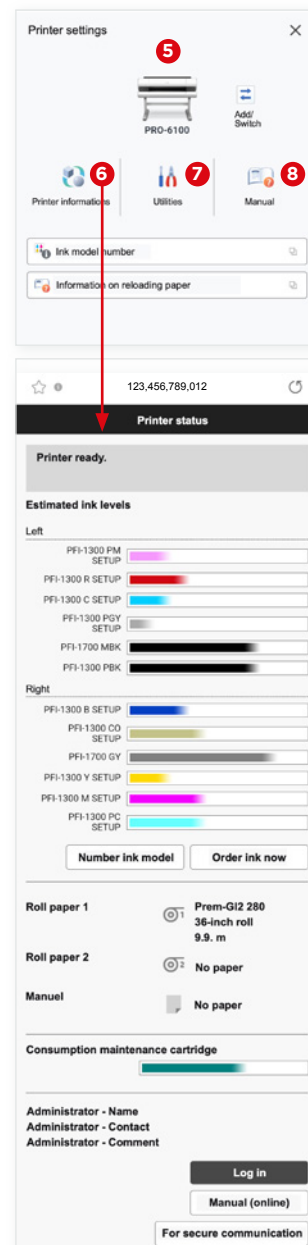
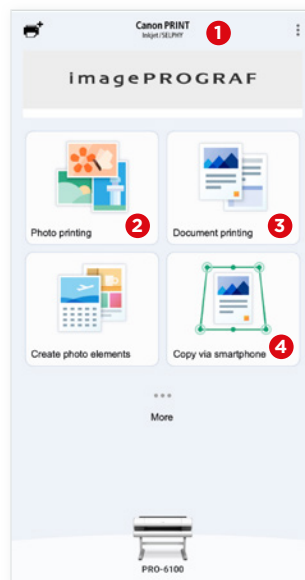
The main menu gives you the choice to print photos and documents from your mobile device or from the cloud.

PDFs and Microsoft Office files can also be printed without a corresponding application as the data is converted for printing.

Simply select the print parameters in the Print Settings, such as format, paper feed or borderless printing.

Other functions allow you to print print samples for nozzle testing and adjustment, view printer status, remaining ink, ink tank information or browse online manuals.

You can also find a video showing how to clear paper jams or load paper on the imagePROGRAF.



- 1 Main menu
- 2 Photo printing
- 3 Document printing
- 4 Copy via smartphone
- 5 Printer settings
- 6 View printer status and ink level (Remote UI)
- 7 Utilities
- 8 Link to manuals

## APPLE AIR PRINT

The imagePROGRAF large format printers also support AirPrint, the standard printing tool for Apple iOS.

It allows you to print from many mobile apps without the need for any other special printing apps or systems. There are no file type restrictions, making it the flexible approach for a variety of printing environments.

## CANON PRINT SERVICE

The Canon Print Service tool for Android devices makes it easy to print to imagePROGRAF large format printers.

It can be downloaded free of charge from the Google Play Store and allows you to print from Android devices without file type restrictions and control large format printing remotely.



## DIRECT PRINT PLUS

imagePROGRAF TA, TM, TX, GP, PRO-S, PRO series, TZ-30000, PlotWave and ColorWave series



This clearly structured and intuitive software tool ensures an efficient large format printing workflow, increases productivity and ease of use.

Direct Print Plus communicates directly with the large format system and automatically incorporates the information it receives into the print workflow.

For example, the width of the loaded roll or the material remaining on it is detected and matched with the quantity of prints required.

With just a few clicks, the user can print a variety of prints in a wide range of file formats such as PDF, JPEG, TIFF or HP-GL/2 even without opening the corresponding applications.

Prints in different media sizes can be easily batch processed. Special print modes can be defined for recurring print jobs.

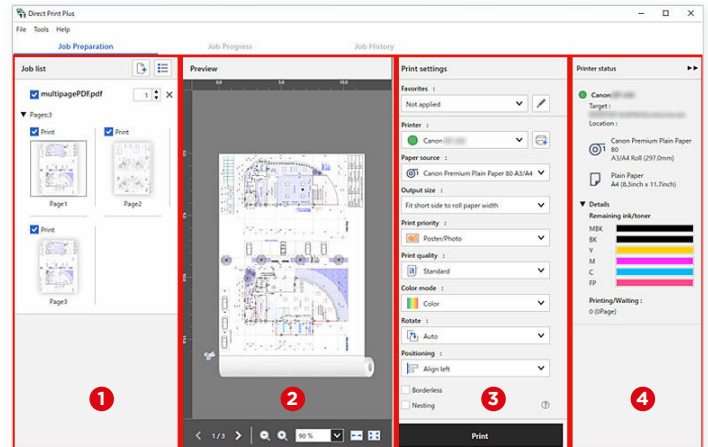
Print history is stored for a specified period of time, so jobs can be reselected from the stored print history and printed again.

In addition, Direct Print Plus displays in the preview window, for example, the optimal arrangement of the prints on the print medium, warnings about remaining material on the roll or about images outside the print area, so that misprinting and wastage of material are prevented.

Direct Print Plus also features a Canon-developed PDF processing engine that significantly speeds up the print workflow by rendering in document units rather than page units.

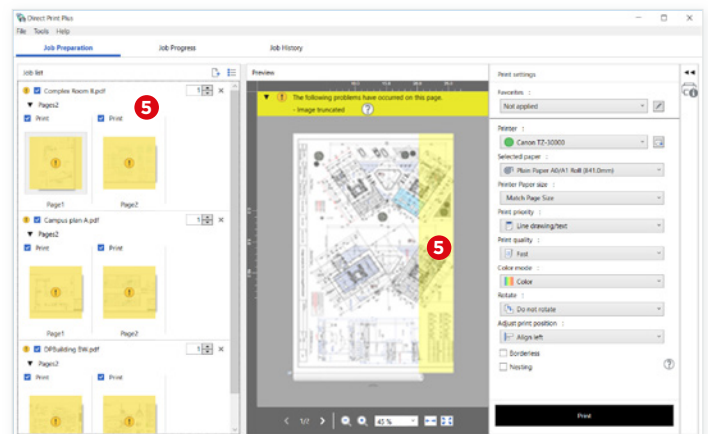
In addition, you can track the print progress in the status window and intervene directly and even remotely in case of print system warnings. This way, the user is warned in good time before the roll runs out and he has to refill.

Direct Print Plus supports almost the entire current imagePROGRAF printer fleet\* as well as the PlotWave and ColorWave wide format printers.



Direct Print Plus start-up screen and print flow

- 1 Drag and drop the files you want to print into the Job List area where they are displayed as thumbnails.
- 2 Check the print preview of the selected files.
- 3 Set the media type and image quality.
- 4 Check the printer status.



- 5 Warnings such as cropped images are displayed well organised in the print preview

## DRIVER SELECT

imagePROGRAF TX-2100/3100/4100, TZ-30000, ColorWave and PlotWave series



This Microsoft-certified large format printer driver tool minimises printing errors and optimises media usage.

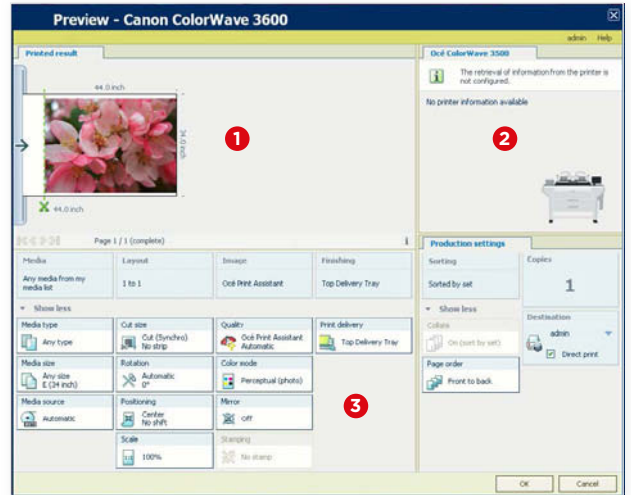
With Driver Select, you can complete your printing in just one step, as print settings are set in just one on-screen menu.

Select the print medium, the format and the arrangement of the print on the print medium and the **dynamic preview** shows you how the print will look later. This permanent feedback from the printer allows you to produce in the highest quality with virtually **no misprints**, saving you time and money.

All printer settings are made intuitively and very easily via the **user interface icons** and frequently used settings become standard workflows by using and changing templates.

With Driver Select, single files can be printed directly from applications such as AutoCAD and Acrobat or from the desktop to a single printer.

Automatic print settings through the Print Wizard tool and job status tracking increase ease of use and boost productivity. The accounting function allows costs to be allocated to specific jobs, departments or customers.



- 1 Printer preview
- 2 Printer selection
- 3 Printer settings via icons

## PUBLISHER SELECT 3

imagePROGRAF TX series, TZ-30000, ColorWave and PlotWave series



**Publisher Select makes it easy to create, print and manage your print jobs, boosting print productivity and saving valuable time.**

Use this **powerful job submission tool** to drive one or two wide format printers simultaneously from one computer, doubling workflow efficiency.

The software's operation is intuitive, as you **drag and drop** print jobs into the document list and print them **using pre-defined templates** – a group of selected and saved printer settings that greatly help **automate** standard print jobs.

Publisher Select automatically analyses your files and selects the optimal media and print settings from the templates you define.

For even faster and more efficient workflows, you can assign print files **to multiple hot folders** at once.

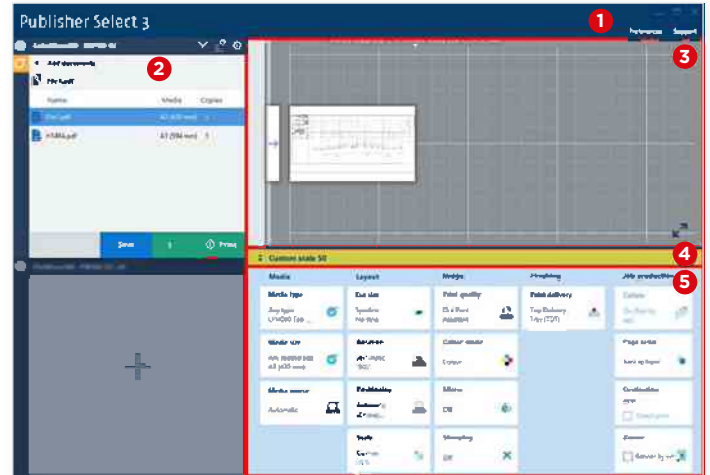
Thanks to the **dynamic print preview**, you can immediately check and correct your print settings and avoid expensive misprints.

For a **better overview** with large print volumes, print banner pages between the individual jobs to easily separate the different jobs from each other.

The **integrated billing function** helps you allocate and split costs to specific departments, projects or customers.

imagePROGRAF printers can be easily integrated into existing production workflows from ColorWave and PlotWave systems.

Final processing, such as folding, can be done via Publisher Select on the iPF TZ-30000.



Publisher Select main menu

- 1 Menu bar for user settings
- 2 Document lists and printer information
- 3 Dynamic print preview
- 4 Template bar
- 5 Change print settings of the template via the tiles of the categories

## PROFESSIONAL PRINT & LAYOUT

imagePROGRAF GP, PRO-S and PRO series



This software for graphic and photo printers helps you to achieve professional prints at the highest level and features a user-friendly workflow.

Professional Print & Layout can be launched either directly or from Photoshop, Photoshop Elements, Lightroom or Digital Photo Professional. It offers a variety of print settings such as index printing, black & white printing and printing with ICC profiles.

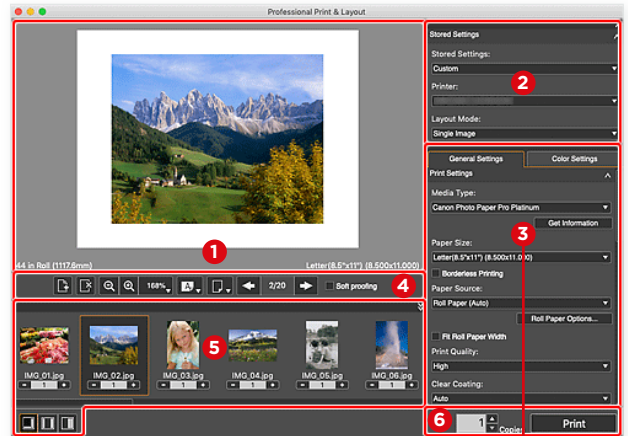
Printing with ICC profiles is always important when you are aiming for colour accuracy. Use **ICC profiles in the soft proofing function** of the software and your image will be displayed on the monitor according to the expected print result.

In addition, the software can read the depth-of-field data from **DPRAW files** and print colour, detail and tonality in the highest quality.

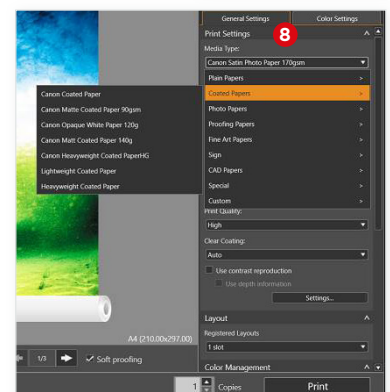
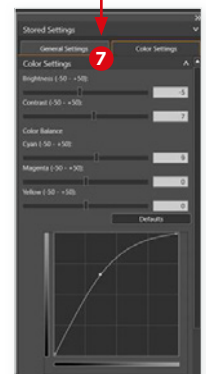
**Colour tone adjustments** can be made via the sliders for brightness, contrast and colour balance. Also, the **gradation curves** can be optimised by simply dragging the curve points. For a consistent look to your images, you can save and load the gradation curves as well as print settings.

For easy and fast printing of **HDR images** with a larger dynamic range, select the "HDR Print" dialogue box in the "Color Settings" tab. In addition, a colour modification especially for showrooms can be activated to optimise more details in overexposed areas.

For efficient use of the print media on the roll or as sheets, you can have the software arrange your images on them automatically. In addition, **free arrangement with and without margins** or with crop marks is possible. With the Gallery Wrap function, the software automatically creates an extension of the image, which is then necessary for wrapping a stretcher frame.



- 1 Preview
- 2 Saved settings
- 3 Settings area with the "General Settings" and "Color Settings" tabs
- 4 Toolbar
- 5 Thumbnails of the photos
- 6 Print buttons
- 7 "Color Settings" area with sliders for adjusting brightness, contrast and colour balance as well as gradation curves
- 8 "General Settings" with window for print media selection



## FREE LAYOUT PLUS

imagePROGRAF TA, TM, TX, GP, PRO-S and PRO series



**Use the entire surface of your print medium for your print jobs with a perfect print layout in nested arrangement.**

Free Layout plus is the ideal printer utility for saving material and time. Automatically, Free Layout plus arranges the print files on the paper so that it is used optimally and there is as little waste as possible.

In the print menu and in PosterArtist, Free Layout plus can be selected as an available printer or is available after installation as a tab via the menu bar in the MS Office programmes.

There are four different print layouts to choose from:

**Fixed Layout:** Printing from one file or several files with the same settings, e.g. borderless printing.

**Free Layout:** Arrange several files freely on the sheet or roll for printing, e.g. if they are to be printed simultaneously in different sizes.

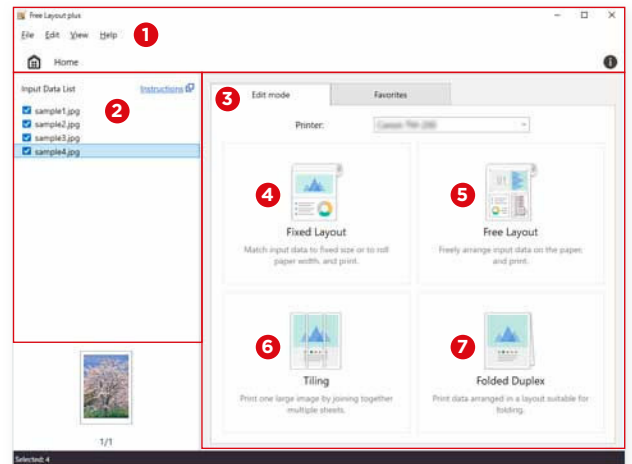
**Tiling:** The file is automatically printed divided by Free Layout plus – for XXL posters or banners in any size.

**Folded Duplex:** Arrange and print the front and back of a ceiling hanger together on one sheet. Then simply fold the ceiling hanger in half and hang it up.

With these four printing options, posters or banners can be printed even from Office programmes if, for example, **slides from PowerPoint** or **Excel spreadsheets** are needed in large format.

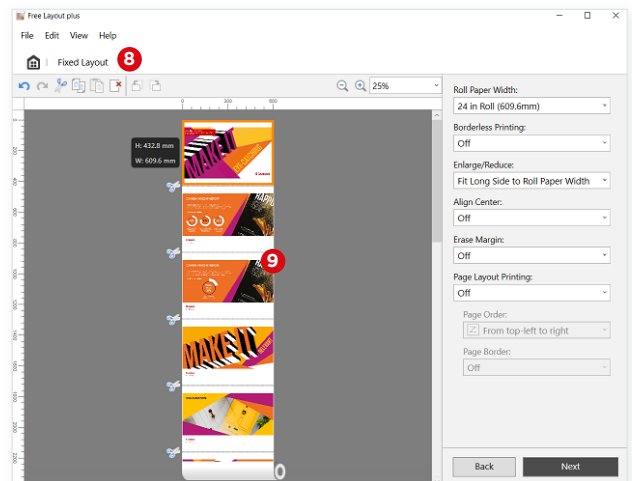
The edit screen shows the files selected for printing in their arrangement, e.g. on the roll, and offers the possibility to change them. In a further step, the **print parameters** for each selected file can be set and checked in a **pre-view**.

The savings potential offered by **nested output** is particularly high when printing on high-quality papers, but the time saved by halving printing times is also a positive factor. Even with a large number of image files, Free Layout plus is able to automatically create an **optimal arrangement** without the need for image editing software. This makes work easier and also saves costs.



Start screen of Free Layout plus

- 1 Menu bar
- 2 List of incoming data
- 3 Editing mode tab
- 4 Fixed Layout
- 5 Free Layout
- 6 Tiling
- 7 Folded Duplex



- 8 Print preview of the "Fixed Layout" print layout
- 9 Printing PowerPoint slides as posters



## POSTERARTIST LITE

imagePROGRAF TA, TM, TX, GP , PRO-S and PRO series



### Create professional quality information and promotional material with the PosterArtist Lite software and print it out in large format.

The software comes with **hundreds of editable templates** and through access to the image databases of databases of Pixabay, Unsplash and Pexels, **millions of stylish images – all free of charge and freely available**

With the **templates**, design elements such as photos, clipart, text, fonts, shapes, lines and backgrounds are editable with just a few clicks and can be resized, coloured and moved to suit your needs.

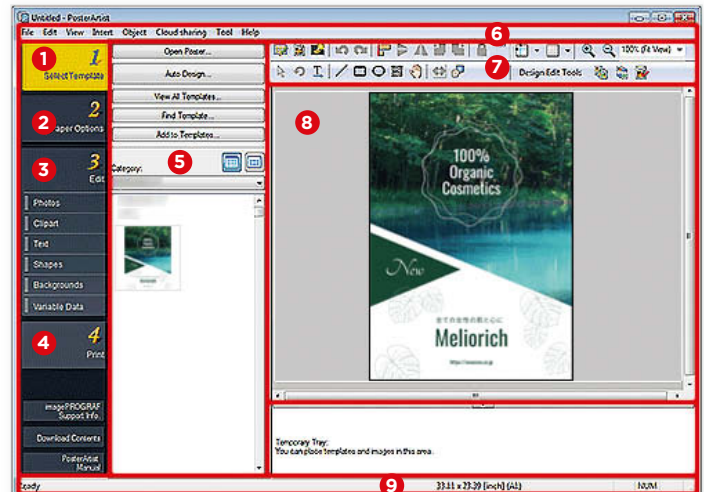
If you need assistance with the design, start the “**Design Assist**” function, via the **Toolbar** and let PosterArtist make design suggestions with your specifications, from which you can then choose. In the toolbar you will find further **tools** with which you can edit and optimise your design.

In the **paper options** you determine the size and orientation of the layout, whereby you can use fixed formats or define your own. Here you can set, for example, borderless printing, adjustment to the width of the inserted roll, print direction or media size.

There are also several new templates in the portfolio for designing eye-catching advertising materials with **fluorescent pink ink**. Posters, banners or stickers can be easily designed and printed in just a few steps.

When printing with the iPF GP series with fluorescent ink, you can choose between two different print modes in PosterArtist Lite. **Spot mode** allows you to apply the fluorescent ink as a **spot colour** to a specific area of your design.

If you want your design to have an overall luminous look, apply the **Vivid mode**. This print mode uses **Radiant Infusion technology** to give you an extended colour gamut of up to 99% of PANTONE FORMULA GUIDE Solid Coated shades.<sup>1</sup>



Create your poster in four easy steps from the PosterArtist home screen

- 1 Select template
- 2 Set paper options
- 3 Edit photos, clipart, text, shapes, backgrounds and variable data
- 4 Print
- 5 Find and open templates
- 6 Menu bar
- 7 Toolbars
- 8 Preview
- 9 Status bar

**Note:** The PosterArtist Lite software is only available for download from the Canon homepage for a limited time. It will be replaced by the PosterArtist Web version in the future.

<sup>1</sup> As of 31 August 2021, according to Pantone™ professional services. "PANTONE PASTELS & NEONS GUIDE Coated" colour gamut coverage is 97% for iPF GP-4000/2000 when using Photo Paper Pro Platinum with imagePROGRAF printer driver at [Poster/Photo (Fluorescent)] [Highest] (600 dpi); "PANTONE FORMULA GUIDE Solid Coated" colour gamut coverage is 99% for iPF GP-4000/2000 using Premium Semi-Matt Paper 2 with imagePROGRAF printer driver at [Poster/Photo (Fluorescent)] [Highest] (600 dpi)

## POSTERARTIST (WEB VERSION)

imagePROGRAF TA, TM, TX, GP, PRO-S and PRO series



With the online version of PosterArtist, you can create great layouts in just a few clicks from your web browser and print them in large format.



Scan the QR code to go to [posterartist.canon](https://posterartist.canon) on the web. Create a **Canon ID** and start designing your poster straight away. Authentication is managed through your Canon ID account to ensure data security.

The online version of PosterArtist also provides you with countless **editable templates**, **millions of photos from image databases** and **clipart** free of charge.

Creating and changing PosterArtist templates or your own layouts via the toolbars is just as easy and convenient in the online version as in the offline version.

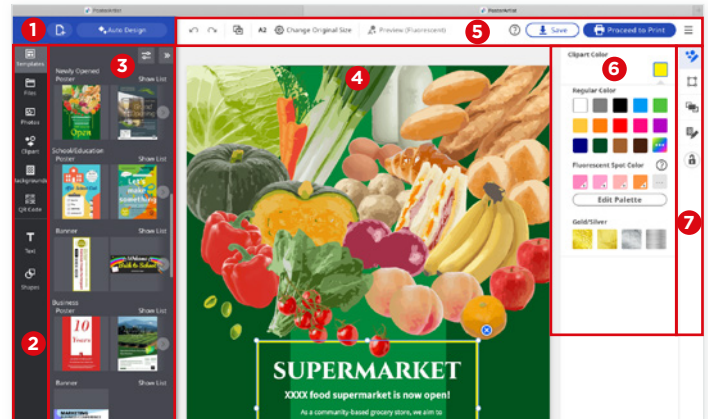
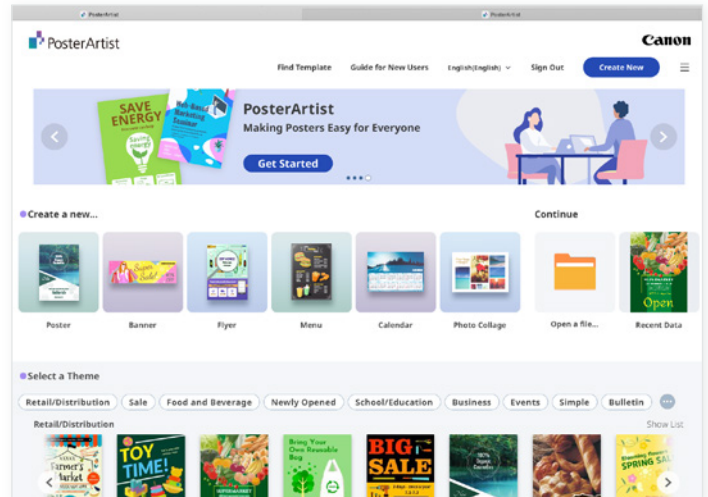
Via the **"Automatic design"** button, you have the option of having the software suggest a wealth of layouts from photos, graphics and heading texts, from which you can then choose.

Your own photos, graphics and PDFs can then additionally be loaded into the template, reduced, enlarged and cropped.

In addition to the range of **fluorescent colours** for printing on the iPF GP models, you can make your designs even more eye-catching and elegant with **gold and silver effects**.

You then save the finished poster via the download button either on your computer or in the cloud, or send it directly to the printer via the printer button in the top toolbar.

In the printer menu, you can set media type, print quality, automatic cutting and borderless printing, for example. For frequently used print options, presets can be defined and used to save time.



Create your poster with just a few clicks from the PosterArtist start screen

- 1 Buttons for creating a new workspace or for the "Automatic Design" function
- 2 Toolbar to create and edit design elements such as photos, clipart, backgrounds, QR codes, text and shapes
- 3 Templates from different business and theme areas
- 4 Layout view
- 5 Toolbar to change page size, save and print the layout
- 6 Specify or change colours and textures, such as fluorescent solid colours and gold and silver effects
- 7 Toolbar for design options such as size, position and arrangement

**BY USING THE RIGHT  
SOFTWARE FOR YOUR  
imagePROGRAF  
YOU CAN SAVE A LOT  
OF TIME AND MONEY.**

Canon's free software helps you get the most out of, control and manage your imagePROGRAF printers. It can be downloaded from the Canon homepage.



[WWW.CANON-EUROPE.COM/SUPPORT/BUSINESS-PRODUCT-SUPPORT/](http://WWW.CANON-EUROPE.COM/SUPPORT/BUSINESS-PRODUCT-SUPPORT/)



Unit 2 Petersfield Business Park  
Bedford Road  
Petersfield  
Hampshire  
GU32 3QA  
Tel: 0844 887 0200  
Fax: 0844 887 0199  
email: [support@kewvisum.com](mailto:support@kewvisum.com)

## **CONTACT**

**Canon Inc.**  
Canon.com

**Canon Europe**  
[canon-europe.com](http://canon-europe.com)

English Edition  
© Canon Europa N.V. 2022

**Canon Europe Limited**  
4 Roundwood Avenue  
Stockley Park  
Uxbridge  
UB11 1AF

**Canon**